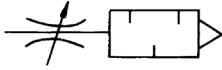


MV Series

Silencer throttle value

JIS Symbol



- Exhaust control valve can control the air flow to alter the operating speed of pneumatic cylinder
- Extreme simplistic structure and design, enabling fault-free, uninterrupted operation
- Exhaust flow control: 0~100



Representation

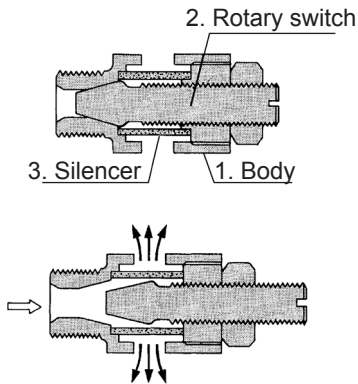
MV 01

Port size

00 : M5x0.8
 01 : PT $\frac{1}{8}$
 02 : PT $\frac{1}{4}$
 03 : PT $\frac{3}{8}$
 04 : PT $\frac{1}{2}$
 06 : PT $\frac{3}{4}$
 08 : PT1

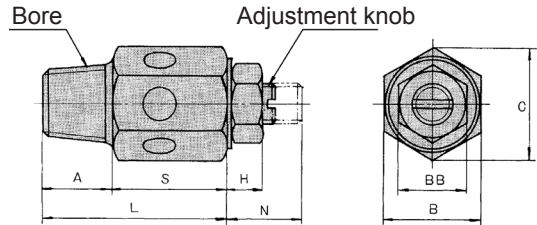
Model No.	Unit	MV-00	MV-01	MV-02	MV-03	MV-04	MV-06	MV-08
Port size	PT	M5x0.8	1/8	1/4	3/8	1/2	3/4	1
Fluid		Air						
Operating pressure range		0~7kgf/cm ² (0~0.686MPa)		0~9.9kgf/cm ² (0~0.971MPa)				
Proved pressure		10.5kgf/cm ² (1.03MPa)		15kgf/cm ² (1.471Mpa)				
Ambient temperature		0~+80°C						
Weight	kgf	0.005	0.02	0.03	0.04	0.07	0.12	0.22

Structure



No.	Component Name	Quantity
1	Body	1
2	Rotary switch	1
3	Silencer	1

Dimensions



Size table

Mark Type	Bore	A	B	BB	C(About)	H	L	N		S
								max	min	
MV-00	M5x0.8	4	8	5.5	9	2	18	6	3.5	14
MV-01	PT $\frac{1}{8}$	8.5	12	8	13.8	3.2	25	13	6	16.5
MV-02	PT $\frac{1}{4}$	12	14	10	16.2	3.6	30	16.5	6	18
MV-03	PT $\frac{3}{8}$	12	17	10	19.6	3.6	30	16.5	6	18
MV-04	PT $\frac{1}{2}$	16	22	10	25.4	3.6	37	18.5	6	21
MV-06	PT $\frac{3}{4}$	18	27	10	31.0	3.6	43	22	8	25
MV-08	PT1	19	36	13	41.0	5	46	22	7.5	27

(Unit: mm)