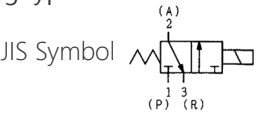


SS23J

3-Port Direct Acting Solenoid Valve
Poppet Seal/Sub-base Mounting type

SS23J
2-position single solenoid

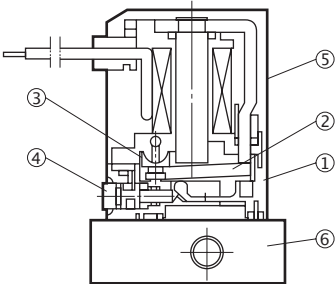


Specifications

Model No.			Unit	SS23J	SS23J (0.5W type)
Fluid				Non-lubricated / lubricated air	
Port size				M5	
Effective area (Cv)			mm ²	0.35 (0.019)	0.2 (0.011)
Ambient temperature			°C	-5~50	
Operating pressure range			MPa	0~0.8	0~0.7
Maximum frequency			cycle/ min	AC : 900 DC : 3000 (L) 1500 (SP , UP)	DC : 2000 (L) 1000 (SP , UP)
Response time (SP , UP type) at 0.5MPa	DC	ON	s	0.006 (0.006)	
		OFF		0.002 (0.015)	
	AC	ON		0.004 : 50Hz 0.004 : 60HZ	
		OFF		0.021 : 50Hz 0.014 : 60HZ	
Rated voltage			V	AC100/110 , 200/220 , DC24 DC12	DC24 DC12
Permissible voltage fluctuation			%	AC±10 DC+10, -15	DC+10, -15
Rated frequency			Hz	50 / 60	
Power consumption (AC 100 / 200)	Holding	VA	2.9 : 50Hz 2.4 : 60Hz	-	
	Inlush		3.2 : 50Hz 2.9 : 60Hz	-	
Power consumption DC				JIS grade B	
Grade of insulation			W	1.8	0.5
Wiring				Lead wire (L) , Connector with lead wire (SP , UP)	
Mass			g	NB : 35 M5 : 50	

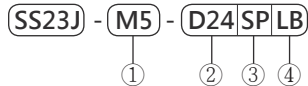
(Note) When using it at temperature of 5°C or below, use dry air that has passed through an air dryer to prevent condensation, freeze, etc.

Construction and Main Parts



No.	Description	Material
1	Pilot base	Synthetic resins
2	Plunger assembly	-
3	Return spring	Stainless steel
4	Manual override	Synthetic resins
5	Solenoid	-
6	Sub-base	Aluminium alloy

Representation



① Port size

NB : Without sub-base
M5 : M5×0.8

② Voltage

100 : AC100V/110V
200 : AC200V/220V
D24 : DC24V
D12 : DC12V
H24 : DC24V 0.5W type

③ Wiring

L : Lead wire
SP : Connector with lead wire (With indicator light & surge suppressor)
UP : Connector with lead wire (With indicator light & surge suppressor)
MP : Without connector of SP type (With surge suppressor)
NP : Without connector of UP type (With surge suppressor)
(Note) MP and NP types are SP and UP types without standard connector. MP and NP types are made to order.

④ Manual override

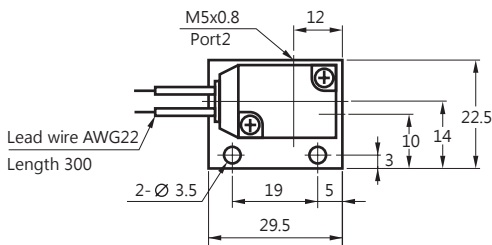
No mark : Standard (Non-lock)
LB : With locking button
(Note) LB : Made to order

A

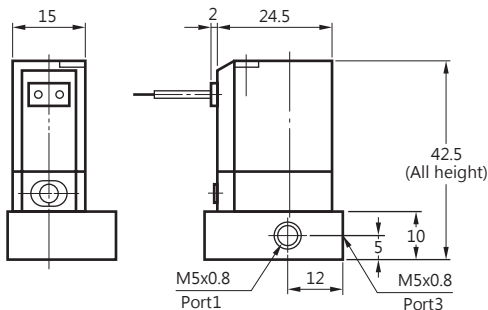
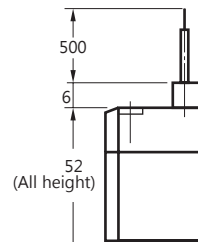
Dimensions

(Unit: mm)

L type



SP type



UP type

