

ADEX A20G Series

5 Port Pilot Operated Solenoid Valve
Rubber Seal/Sub-base Mounting type

A20GS25

2-position, single solenoid

A20GD25

2-position, double solenoid

A20GD35

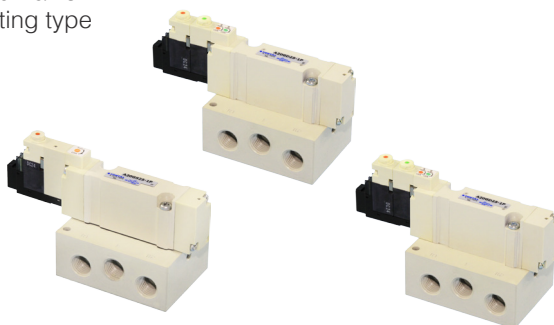
3-position, closed center

A20GE35

3-position, ABR connect

A20GO35

3-position, PAB connect



Specifications

Model No.			Unit	A20GS25	A20GD25	A20GD35	A20GE35	A20GO35
Fluid				Non-lubricated/lubricated air				
Port size				RC ¼,⅜				
Effective area			mm²	20.6		15.9		20.5
Cv value				1.13		0.87		1.13
Operating ambient temperature			°C	-5~50				
Pressure range			MPa	0.15~0.7	0.1~0.7	0.2~0.7		
				-0.1~0.7 For external pilot operation				
Maximum Frequency			cycle/min	300		200		
Response Time	DC	ON	s	0.018	0.015	0.018		
		OFF	s	0.032 (0.038)	—	0.091 (0.097)		
Pilot air exhaust				Captured exhaust				
Manual override				Screw driver-operated locking button				
Mounting position				Free				
Shock resistance, vibration resistance			m/s²	150/30				
Weight	Without sub-base		g	95	104	112		
	With sub-base		g	336	346	354		



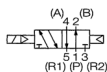
- Service kit not available
- Supply complete-dry air to avoid freezing when temperature of valve site falls below 5°C
- Pressure range of external pilot supply: 0.25~0.7MPa
- Response time in bracket () is displayed with surge suppressor
- Response time shown above is in accordance with JIB B 8375
- Effective area shown above is a value between ports 1 and 2, 4

Electrical Specifications

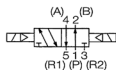
Rated voltage	V	DC24, 12, 6, 5, 3
Permissible voltage fluctuation	%	+10, -10
Power consumption	W	0.6 (with indicator light and surge suppressor), 0.55 (without indicator light and surge suppressor)
Grade of Insulation		JIS grade E
Wiring		Plug-in connector
Surge suppressor		Diode
Indicator light		LED

A20G**S25****1****P****02****S****Switch Form****S25**

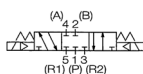
2-position, single solenoid

**D25**

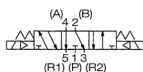
2-position, double solenoid

**D35**

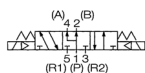
3-position, closed center

**E35**

3-position, ABR connect

**O35**

3-position, PAB connect

**Special Specification**

No mark : standard

(Internal pilot)

X : *External pilot

Voltage

1: DC24V

2: *DC12V

3: *DC6V

4: *DC5V

5: *DC3V

Wiring

No mark: Without connector

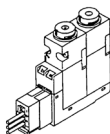
- S : Connector with lead wire for single solenoid (Length: 500 mm)
- D : Connector with lead wire for double solenoid (Length: 500 mm)

Port size

No mark : Without sub-base

02 : Rc $\frac{1}{4}$ 03 : Rc $\frac{3}{8}$ G2 : *G $\frac{1}{4}$ G3 : *G $\frac{3}{8}$ N2 : *NPT $\frac{1}{4}$ N3 : *NPT $\frac{3}{8}$ F2 : *NPTF $\frac{1}{4}$ F3 : *NPTF $\frac{3}{8}$

(Valve without sub-base comes with a base gasket & two mounting screws)

Wiring withdrawal direction**NPN type**

P: With indicator light and surge suppressor

S: Without indicator light and surge suppressor

PNP type

*M: With indicator light and surge suppressor

*J: Without indicator light and surge suppressor



*: Made to order

Connector with lead wire

A 0 5 G S - D C - C L 5 - M

Polarity

No mark: NPN type
M: *PNP type

Lead wire length

5 : 500mm
10: *1000mm

Voltage

DC: For DC

Type

GS : For GF type
single solenoid
GD : For GF type
double solenoid

For GF type single solenoid



For GF type double solenoid



(For common use with GF type of A05, A12, and A20)

Locking cover

A 0 5 P - L A

Color

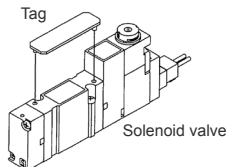
A: Orange
(For solenoid A side)
B: Green
(For solenoid B side)



(For common use with all
A05, A12, and A20)

Tag for solenoid valve

A 0 5 P - N (Pack of 10)



(For common use with sub-base mounting type of
A05, A12, and A20)

Sub-base

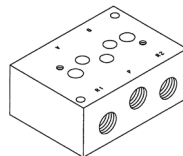
A 2 0 P - B - 0 2 X

Port size

02 : Rc $\frac{1}{4}$
03 : Rc $\frac{1}{2}$
G2 : *G $\frac{1}{4}$
G3 : *G $\frac{3}{8}$
N2 : *NPT $\frac{1}{4}$
N3 : *NPT $\frac{3}{8}$
F2 : *NPTF $\frac{1}{4}$
F3 : *NPTF $\frac{3}{8}$

Special Specifications

No mark: Standard
X : For external
pilot (with
port X)



(For common use with A20P)

Base gasket

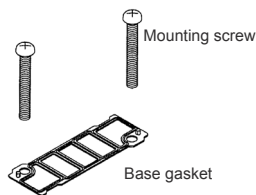
A 2 0 P X - G

Special Specifications

No mark: Standard
X : For external
pilot (with
port X)

Content of kit

SG: Gasket &
mounting screws
G : Only gasket (Pack
of 10)
S : Only mounting
screw (Pack of 20)

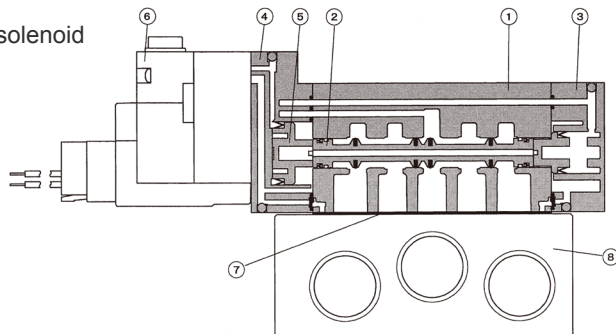


(For common use with A20P)

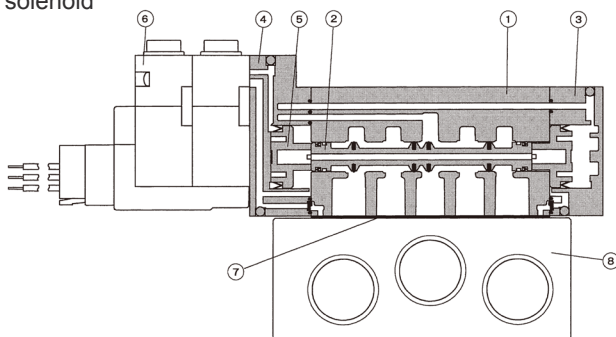


※: Made to order

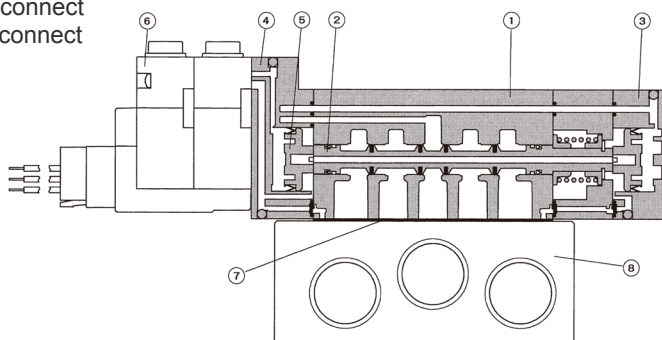
◎ 2-position Single solenoid



◎ 2-position Double solenoid



◎ 3-position Closed center
3-position ABR connect
3-position PAB connect

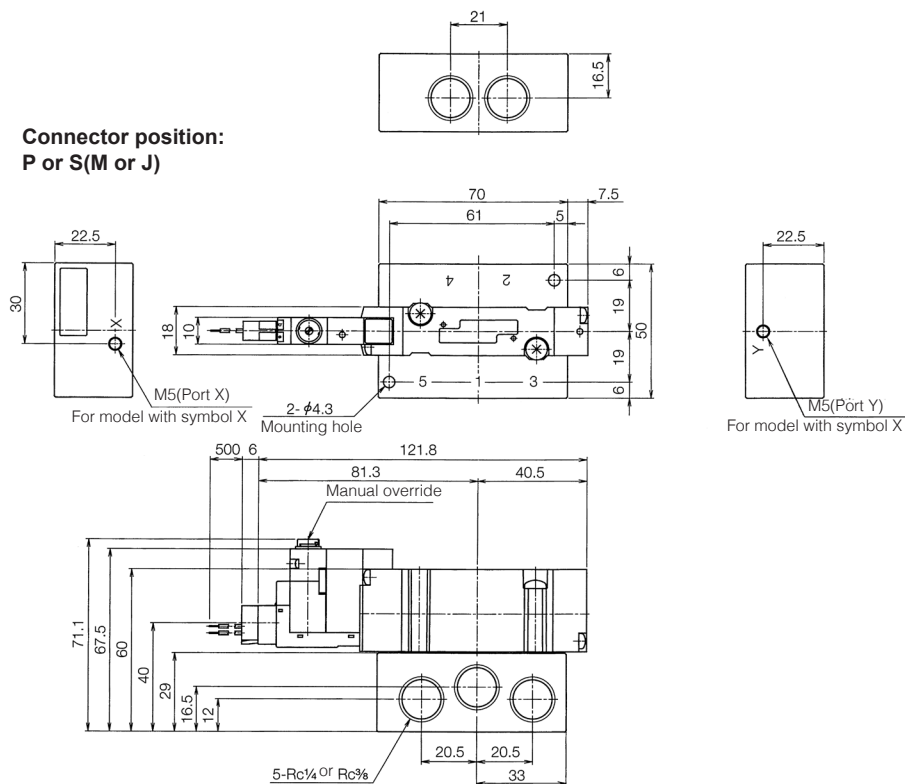
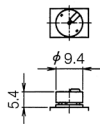


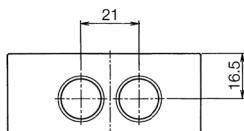
Main Component

No.	Description	Material
1	Body	Zinc die-casting
2	Spool assembly	Aluminium alloy/NBR
3	End cover	Resin
4	Piston head	Resin
5	Piston	Resin
6	Pilot valve	Refer to A00 Series
7	Base gasket	NBR
8	Sub-base	Alluminium die-casting

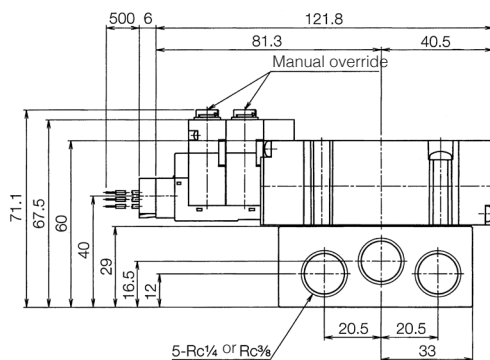
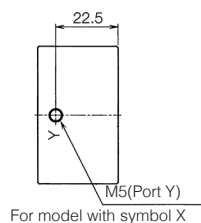
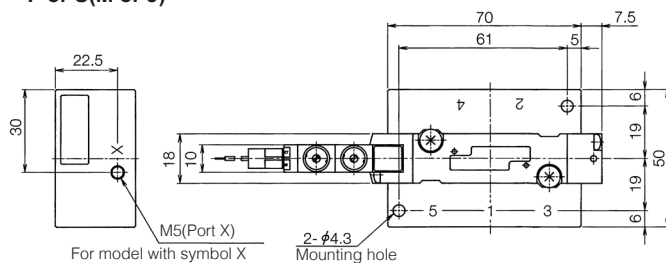
A20GS25

(Unit: mm)

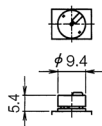
**Manual locking cover**



**Connector position:
P or S (M or J)**



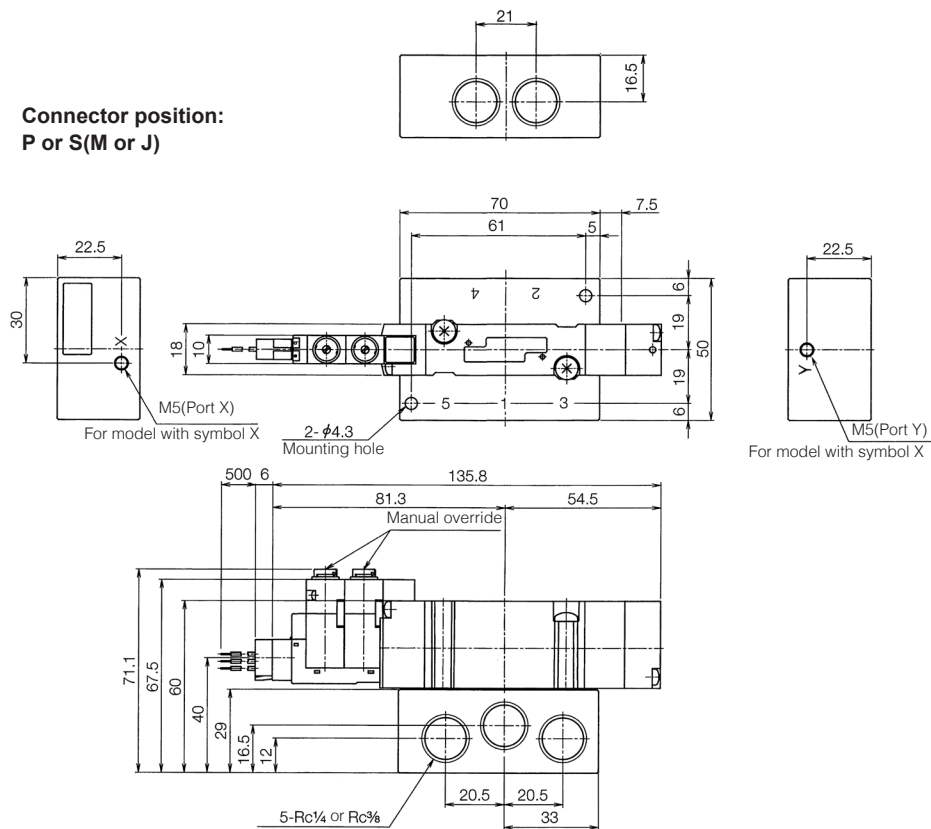
Manual locking cover



A20GD35, A20GE35, A20GO35

(Unit: mm)

**Connector position:
P or S(M or J)**



Manual locking cover

