

ADEX A00S Series

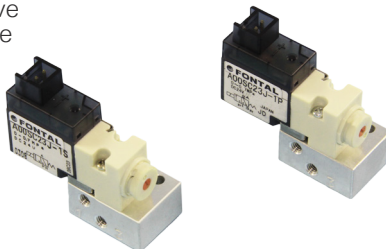
3 Port Direct Operated Solenoid Valve
Poppet Seal/Sub-base Mounting type

A00SO23

2-position, single solenoid,
normal open

A00SC23

2-position, double solenoid,
normal closed



Specifications

Model No.			Unit	A00SO23	A00SC23	A00SO23J	A00SC23J
Fluid				Non-lubricated/lubricated air			
Port size				M3			
Effective area			mm ²	0.14		0.22	
Cv value				0.008		0.012	
Operating ambient temperature			°C	-5~50			
Pressure range			MPa	0~0.5	0~0.7	0~0.5	0~0.7
Vacuum application			MPa	-0.1~0.4	-0.1~0.6	-0.1~0.5	-0.1~0.6
				Port 3 →	Port 1 →	Port 3 →	Port 1 →
				Vacuum	Vacuum	Vacuum	Vacuum
				Port 1 →	Port 3 →	Port 1 →	Port 3 →
				Pressured air	Pressured air	Pressured air	Pressured air
Maximum Frequency			cycle/min	600			
Response Time	DC	ON	s	0.005			
		OFF	s	0.005(0.01)			
	AC	ON	s	0.009		—	
		OFF	s	0.01		—	
Manual override				Screwdriver-operated locking button			
Mounting position				Free			
Shock resistance.vibration resistance			m/s ²	150/30			
Weight	Without sub-base		g	12.6			
	With sub-base		g	20.6			



- Service kit not available
- When temperature of valve site goes down blow 5°C, complete dry air shall be supplied to prevent from freezing.
- Response time in bracket () is displayed with surge suppressor
- Response time shown above is in accordance with JIB B 8375
- Effective area shown above is a value between ports 1 and 2, 4

Electrical Specifications

Rated voltage		DC	V	24, 12, 6, 5, 3	
		AC	V	110 (50/60Hz)	—
Permissible voltage fluctuation			%	+10, -10	
Power consumption	DC		W	0.6 (with indicator light and surge suppressor), 0.55 (without indicator light and surge suppressor)	
				0.91 (with indicator light and surge suppressor), 0.86 (without indicator light and surge suppressor)	
	AC	110V	VA	1.4 (with indicator light and surge suppressor), 1.3 (without indicator light and surge suppressor)	
				—	
Grade of Insulation				JIS grade E	
Wiring				Plug-in connector	
Surge suppressor				Diode	
Indicator light				LED	

A00S**O23 J - 1 P - M3 - E****Switch Form****O23**

single solenoid, normal open

**C23**

single solenoid, normal closed

**Flow**

No mark: Standard type

J : Large flow type

Voltage

1: DC24V

2: *DC12V

3: *DC6V

4: *DC5V

5: *DC3V

7: *AC100V

8: AC110V

Wiring

No mark: Without connector

E : Connector with wire
(Length: 500 mm)**Port size**

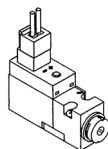
No mark: Without sub-base

M3 : M3

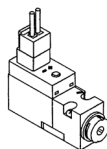
(Valve without sub-base comes with a base gasket & two mounting screws)

Wiring withdrawal direction**P:**

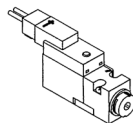
With indicator light and surge suppressor

**S:**

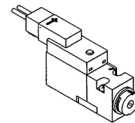
Without indicator light and surge suppressor

**Q:**

With indicator light and surge suppressor

**B:**

Without indicator light and surge suppressor



*: Made to order

Connector with lead wire

A 0 5 P — D C — C L 5

Lead wire length

5 : 500mm

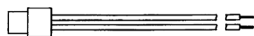
10: ※1000mm

Voltage

DC: For DC

AC: For AC type

For PR type



	DC	AC
(+)	Black	Blue
(-)	Red	Blue

(For common use with PR type of A05, A12, A20, and A00S)

Locking cover

A 0 5 P — L A



Color

A: Orange

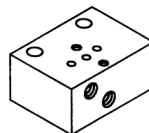
(For common use with all A05, A12, and A20, and A00S)

Sub-base

A 0 0 S — B — M 3

Port size

M3 : M3



Base gasket

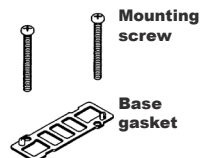
A 0 0 S — G

Content of kit

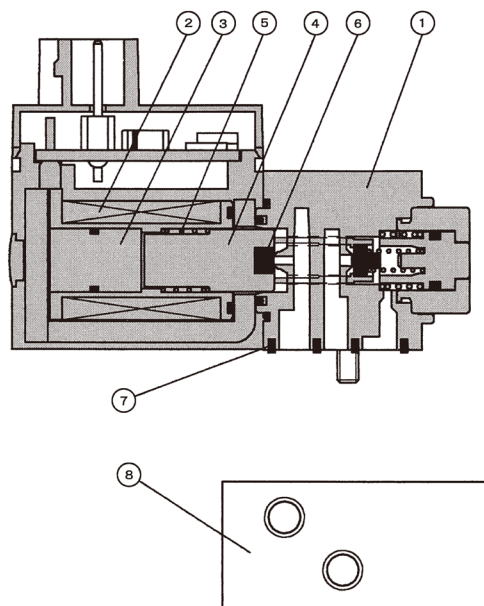
SG: Gasket & mounting screws

G : Only gasket (Pack of 10)

S : Only mounting screw (Pack of 20)



※: Made to order

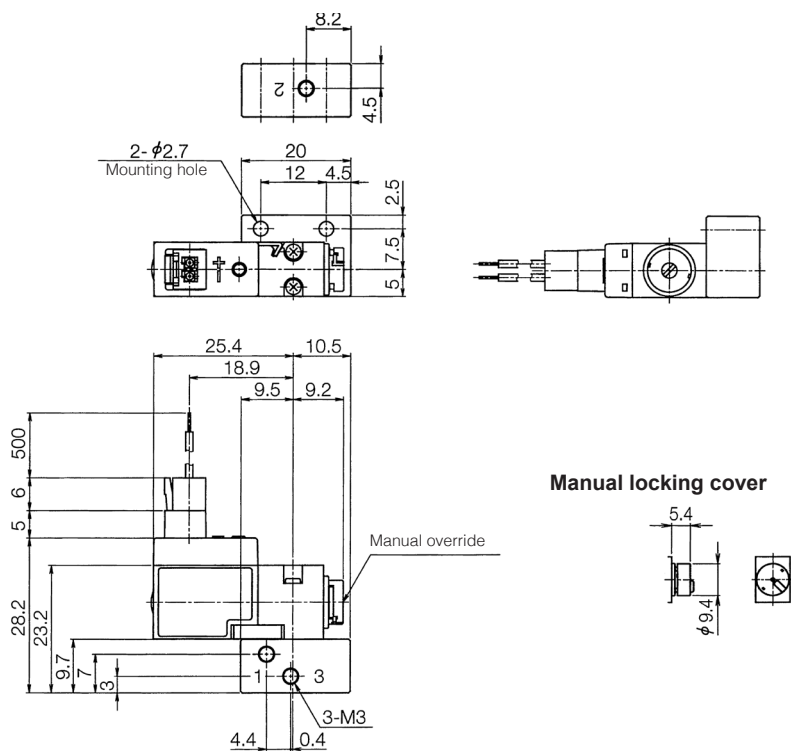


Main Component

No.	Description	Material
1	Body	Zinc die-casting
2	Spool assembly	Aluminium alloy/NBR
3	End cover	Resin
4	Piston head	Resin
5	Piston	Resin
6	Pilot valve	Refer to A00 Series
7	Base gasket	NBR
8	Sub-base	Alluminium die-casting

A00SO23-□P(S), A00SC23-□P(S)

(Unit: mm)



A00SO23-□Q(B), A00SC23-□Q(B)

(Unit: mm)

