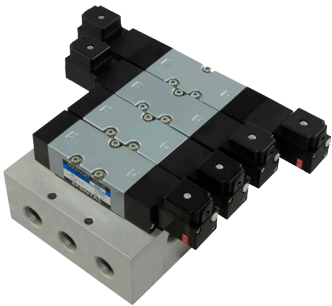


MFS□-PC15 Series

Individual Wiring Type Manifold Bar Type

MFS□-PC15
Common SUP, common
EXH, port 2 & 4 on both sides



Available for multipurpose

As pilot supply is branched in manifold, it can be used for special purposes such as double supply, low pressure, vacuum,etc.

Manifold Specifications

Type of manifold		MFS□-PC15 Common SUP, common EXH, port 2 & 4 on both sides
Port size	Port 1	Rc $\frac{3}{4}$ (Both sides)
	Port 3, 5	Rc $\frac{3}{4}$ (Both sides)
	Port 2, 4	Rc $\frac{1}{2}$ (Side)
Number of stations		2~10
Mountable solenoid valve		PCS2415-NB-※ PCD2415-NB-※ PCD3415-NB-※ PCE3415-NB-※ PCO3415-NB-※
Blank plate		PC15-BP



Label

- Specify the type and number of manifolds and solenoid valves, as well as the number of blank plates in accordance with the following example.

Example: MFS8-PC15-04

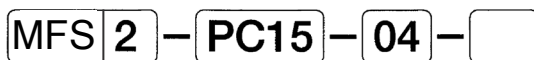
PCS2415-NB-110G	4 pcs.
PCD2415-NB-110G	2 pcs.
PCD3415-NB-110G	1 pcs.
PC15-BP	1 pcs.



Caution

- When mounting solenoid valve to be used at different pressure on the same manifold, mount a solenoid valve from port 1 on one of the right end or left end(0.8 MPa maximum).
- For special circuit, please refer to "Specification for Manifold"

Manifold



Type of manifold

MFS: Common SUP, common EXH, port 2 & 4 on both sides

Mountable solenoid valve series

PC15: PC15 Series

Special specifications

No mark: Standard
A : Bottom ported

Number of stations

2 : 2 stations
:
:
10 : 10 stations

Port size 2&4

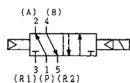
04: Rc $\frac{1}{2}$

Mountable solenoid valve

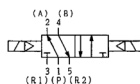


Model No.

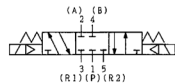
PCS2415



PCD2415



PCD3415



PCE3415



PCO3415



Manual override

No mark: Standard
(Non locking)
※ L : With locking button

Wiring

L : Lead wire
G : Grommet with terminal
C : Conduit with terminal
※ GK : Grommet with surge suppressor
※ CK : Conduit with surge suppressor
D : DIN connector
DK : DIN connector with surge suppressor

Voltage

110 : AC110V
220 : AC220V
D24 : DC24V

Port size

NB: Without sub-base



※: Made to order

(Unit: mm)

Technical drawings of the PCD2415 connector showing side and front views for Type G, Type C, and Type L configurations.

Side View (Left):

- Port 1: 2-Rc3/4, Side plugged
- Port 5: 2-Rc3/4, Side plugged
- Port 3: 2-Rc3/4, Side plugged
- Dimensions: 40, 40, 24

Front View (Right):

- Port 4: n-Rc1/2
- PCD3415, PCE3415, PC03415
- PCD2415
- PCS2415
- 4-φ7 (Mounting hole)
- Dimensions: 140, 70, 20, 20, 127, 105, 58, 105, 127, 45, 40, 7, 40n+36, 40n+50, 7

Type G:

- Port 3: 2-Rc3/4, Side plugged
- Dimensions: 27

Type C:

- Lead wire length 500
- Dimensions: 8, 14, MAX. 16.5

Type L:

- Port 2: n-Rc1/2
- Dimensions: 91, 60, 41.5