

MF□-PC06 Series

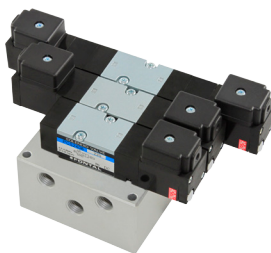
Individual Wiring Type Manifold Bar Type

MFS□-PC06

Common SUP, common EXH, port 2 & 4 on both sides

MFB□-PC06

Common SUP, common EXH, port 2 & 4 on the bottom



Manifold Specifications

Type of manifold		MFS□-PC06 Common SUP, common EXH, port 2 & 4 on both sides	MFB□-PC06 Common SUP, common EXH, port 2 & 4 on the bottom
Port size	Port 1	Rc¼(Both sides)	Rc¼(Both sides)
	Port 3, 5	Rc¼(Both sides)	Rc¼(Both sides)
	Port 2, 4	Rc¼(Side)	Rc¼(Bottom)
Number of stations		2~10	
Mountable solenoid valve		PCS2406-NB-※ PCD2406-NB-※ PCD3406-NB-※ PCE3406-NB-※ PCO3406-NB-※	
Blank plate		PC06-BP	



Label

- Specify the type and number of manifolds and solenoid valves, as well as the number of blank plates(PC06-BP) in accordance with the following example.

Example: MFS8-PC06-02

PCS2406-NB-110G	4 pcs.
PCD2406-NB-110G	2 pcs.
PCD3406-NB-110G	1 pcs.
PC06-BP	1 pcs.

PC/RC06, 08, 15

Manifold



Type of manifold

MFS: Common SUP, common EXH,
port 2 & 4 on both sides
MFB: Common SUP, common EXH,
port 2 & 4 on the bottom

Mountable solenoid valve

PC06: PC06 Series

Number of stations

2 : 2 stations
⋮
10 : 10 stations

Port size 2&4

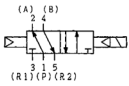
02: Rc1/4

Mountable solenoid valve

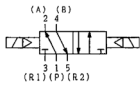


Model No.

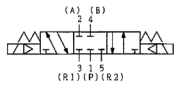
PCS2406



PCD2406



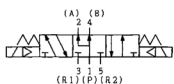
PCD3406



PCE3406



PCO3406



Manual override

No mark: Standard (Non locking)
※ L : With locking button

Wiring

- L : Lead wire
- G : Grommet with terminal
- C : Conduit with terminal
- ※ GK: Grommet with surge suppressor
- ※ CK: Conduit with surge suppressor
- D : DIN connector
- DK : DIN connector with surge suppressor

Voltage

110: AC110V
220: AC220V
D24: DC24V

Port size

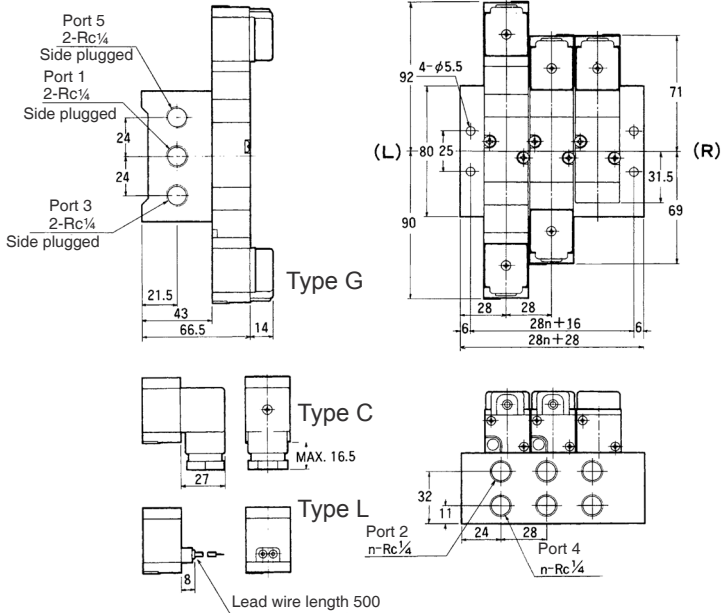
NB : Without sub-base

※ : Made to order

MFS□-PC06-02

(Unit: mm)

(Note) Standard manifold is plugged on "R" (Right) side ports.



MFB□-PC06-02

(Unit: mm)

(Note) Standard manifold is plugged on "R" (Right) side ports.

