

VM10 Series

5 Port Air Operated Valve
Metal Seal/Sub-base Mounting Type

- VMS2410**
2-position, single sided
- VMD2410**
2-position, double sided
- VMD3410**
3-position, closed center
- VME3410**
3-position, ABR connect



Specifications

Model No.	Unit	VMS2410	VMD2410	VMD3410	VME3410
Fluid		Non-lubricated/lubricated air			
Port size		RC $\frac{3}{8}$, $\frac{1}{2}$			
Sonic-speed transmission \ominus	dm ³ /(s·bar)	10.00		10.00	
Critical pressure ratio \ominus		0.2		0.18	
Effective area \ominus	mm ²	50		50	
Operating ambient temperature	°C	-5~70 Ⓢ			
Operating pressure range	MPa	-0.1~1			
Pilot pressure	MPa	0.2~0.8 Ⓢ			
Mass	kg	1.45	1.45	1.75	1.75



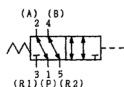
1. When the temperature falls below 5 °C, please provide air dryer to prevent water frozen.
2. Pilot pressure must remain greater than the working pressure. (Pilot pressure \geq Working pressure).
3. The value shown in sonic-speed transmission, critical pressure ratio, effective area, Cv value represent the value of Port 1 -> 4.

Representation

VMS2410 - 03

Model No.

VMS2410



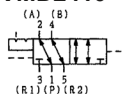
Port size

NB: Without sub-base

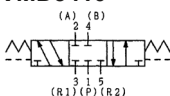
03: RC $\frac{3}{8}$

04: RC $\frac{1}{2}$

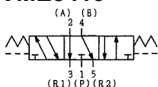
VMD2410



VMD3410



VME3410



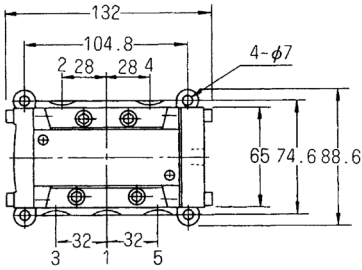
Backup

Sub-base, sub-base gasket, spring are the same as those of PM10 Series.

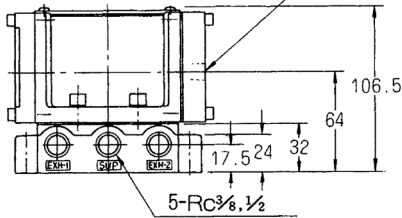
Air Operated

VMS2410

(Unit: mm)

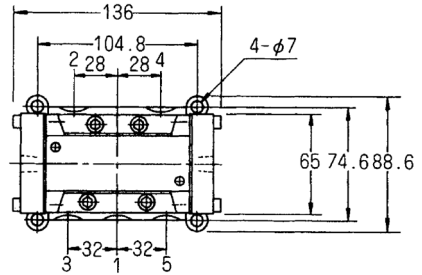


Pilot hole $Rc\frac{1}{4}$

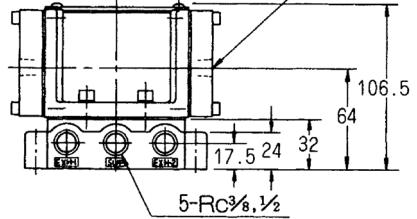


VMD2410

(Unit: mm)

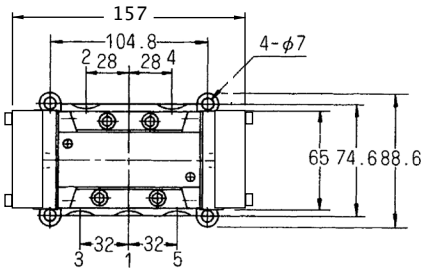


Pilot hole $2-Rc\frac{1}{4}$



VMD3410, VME3410

(Unit: mm)



Pilot hole $2-Rc\frac{1}{4}$

